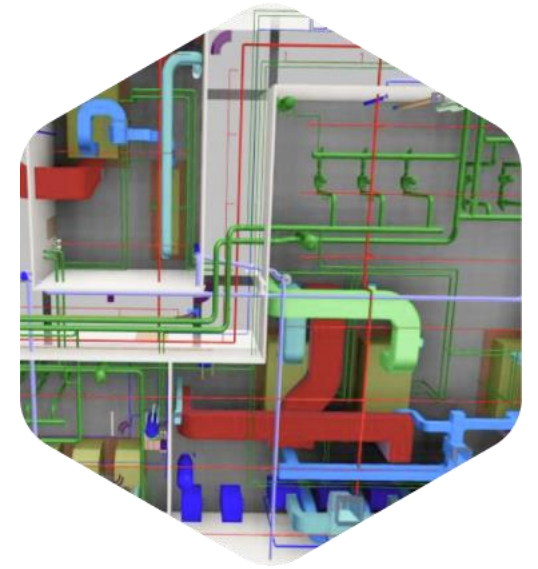




COMPANY OVERVIEW

Advenser is a multi-disciplined engineering company delivering advanced engineering services & solutions to the construction industry through innovative practices, utilizing BIM and advanced technological tools. Since 2007, we have accumulated extensive experience in the AEC industry, delivering a variety of complex projects across multiple countries with a proven track record of success.

Our engineering team, with a workforce of more than 250+ Engineers with Architectural, Structural and MEP experience, have the expertise and skillsets to meet the demands of any complex project anywhere in the world. We streamline our services to match & adapt to your constantly evolving needs.



OUR CLIENT BASE



WHAT MAKES US UNIQUE

Development, management & streamlining of integrated multi-disciplinary performance models of projects & products



Quality Standards

Multi-stage quality control methods ensure exceptional engineering quality



Global Operations

Sales offices & operation in multiple countries



Comprehensive Solutions

Comprehensive BIM / CAD Services for Architectural, Engineering, Construction & Manufacturing Industry under one roof



End to End Service

Services that span the complete project life cycle from design to maintenance



Global Project Experience

Global track record across North America, Europe, Australasia & Middle East



Trade Knowledge & Expertise

Expert resources with multinational project experience & trade knowledge



WHERE ARE WE NOW

Clients spanning across 18 countries with projects experience in over 4 continents

Multi-disciplinary engineering departments for Architecture, Mechanical, MEP, Façade, Precast, Steel & Rebar

Exceptional team of over 250+ engineers with a diverse array of perspectives, talents, business experience and technical expertise

An umbrella of diverse services and solutions for all stages of a project from design through construction to facility management

Diverse experience portfolio in residential, commercial, industrial, healthcare and educational projects

Around 5000 projects from over 700 clients



“

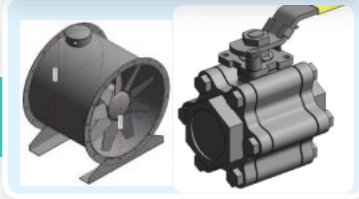
From humble beginnings, we have now grown to be one of most prominent global engineering services providers by setting the highest standards for our conduct and reputation in everything we do.

OUR SERVICES

ARCHITECTURAL BIM



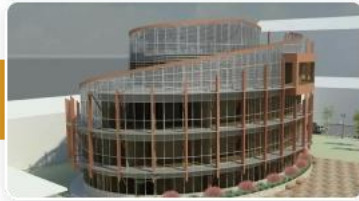
BIM OBJECT LIBRARIES



COMPREHENSIVE BIM



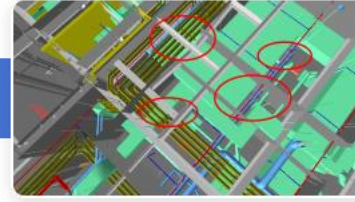
FAÇADE DETAILING



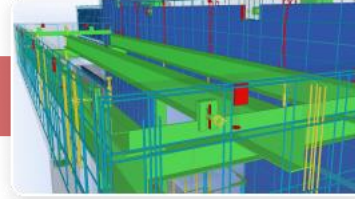
INFRASTRUCTURE BIM



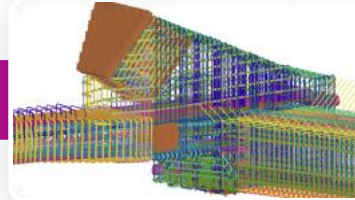
MEP COORDINATION



PRECAST DETAILING



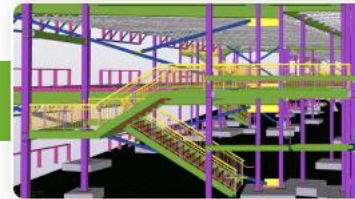
REBAR DETAILING



SCAN TO BIM



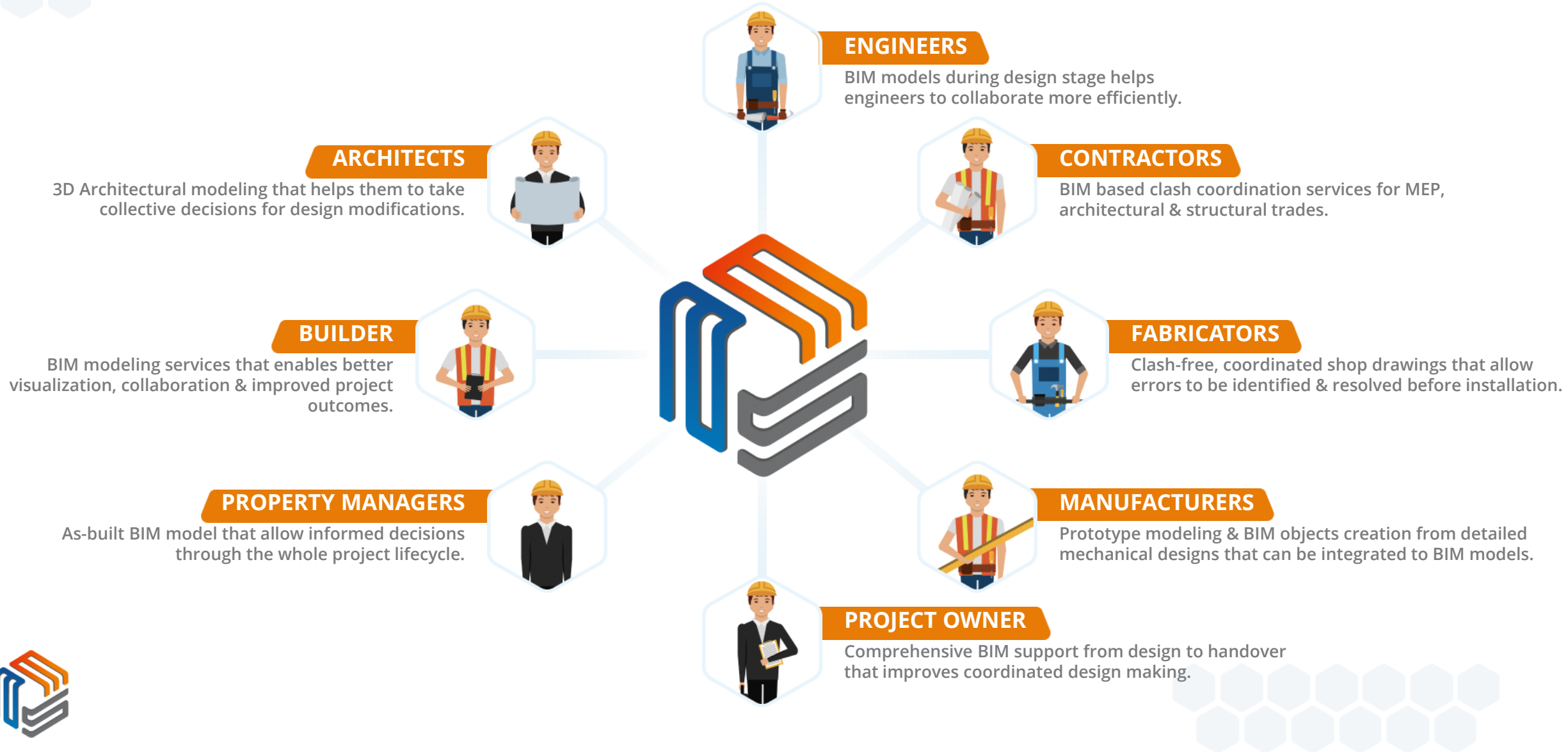
STEEL DETAILING



BIM TRAINING



ADVENSER IN BIM SUPPLY CHAIN



ARCHITECTURAL MODELING

Intelligent visualization of projects with broad level of details and calculations to improve the quality of delivery and turnaround the time.

ARCHITECTURAL BIM

SHOP DRAWING CREATION

DESIGN DEVELOPMENT

CONSTRUCTION DOCUMENTATION

POINT CLOUD MODELING



MEP & HVAC BIM

We place ourselves before the AEC industry as a conversant workforce of MEP/HVAC engineers providing MEP BIM services to various sectors which include educational institutions, healthcare, plants, residential, commercial and industrial buildings.

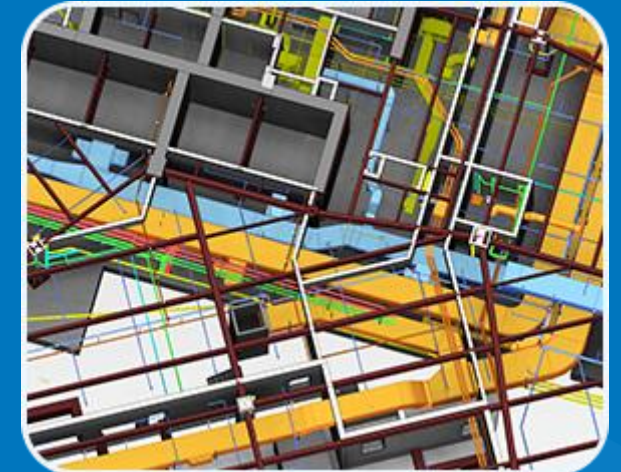
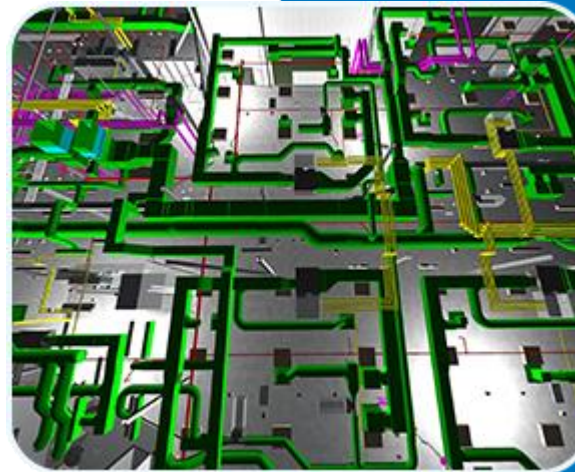
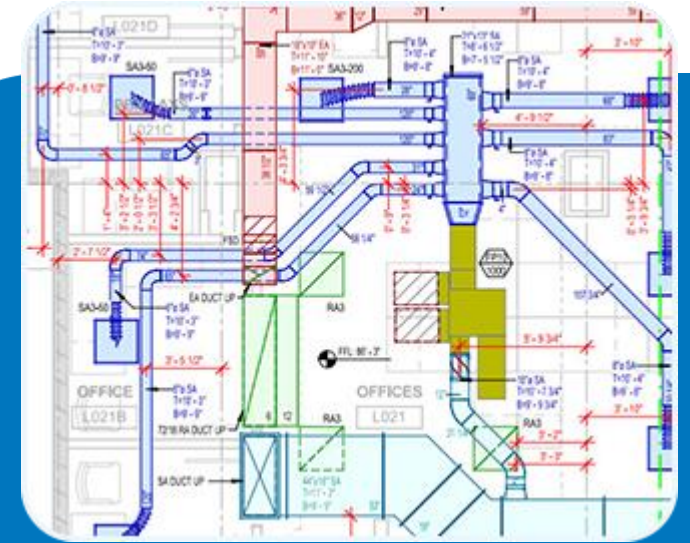
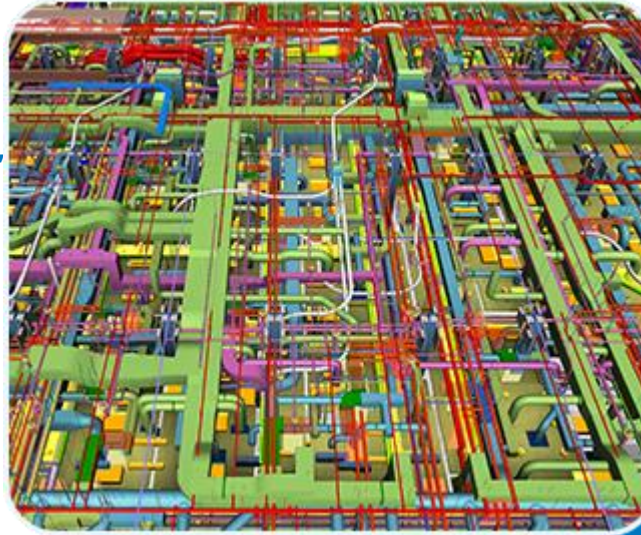
3D COORDINATION & CLASH REPORT

SHOP & FABRICATION DRAWING

DESIGN DEVELOPMENT

POINT CLOUD MODELING

SPOOL DRAWING



STEEL, PRECAST & REBAR **DETAILING**

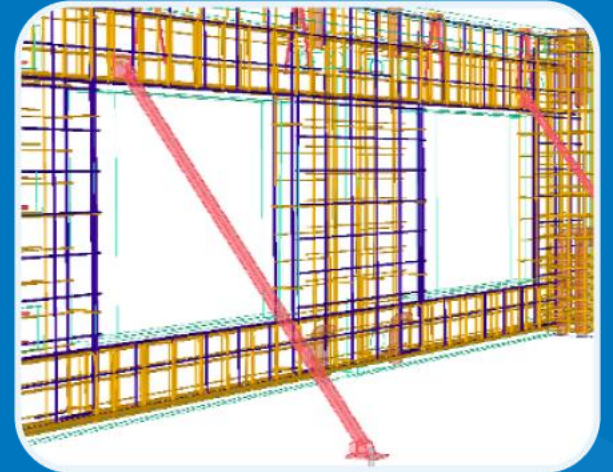
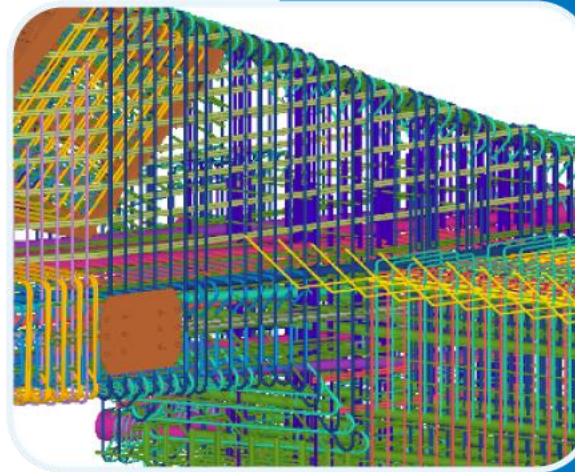
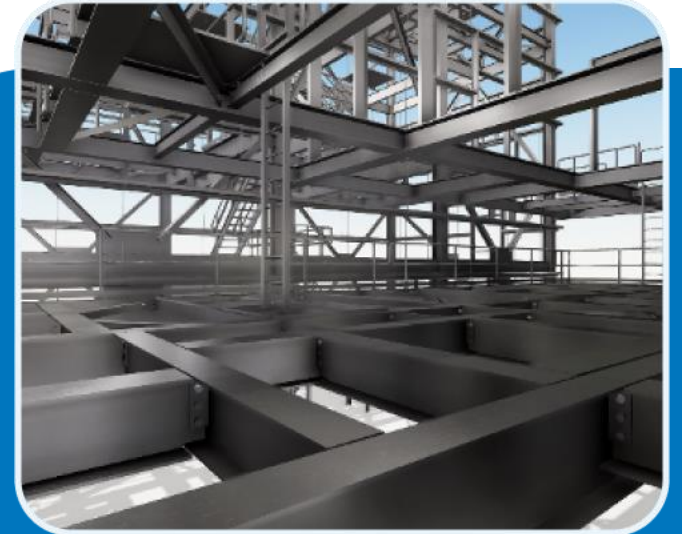
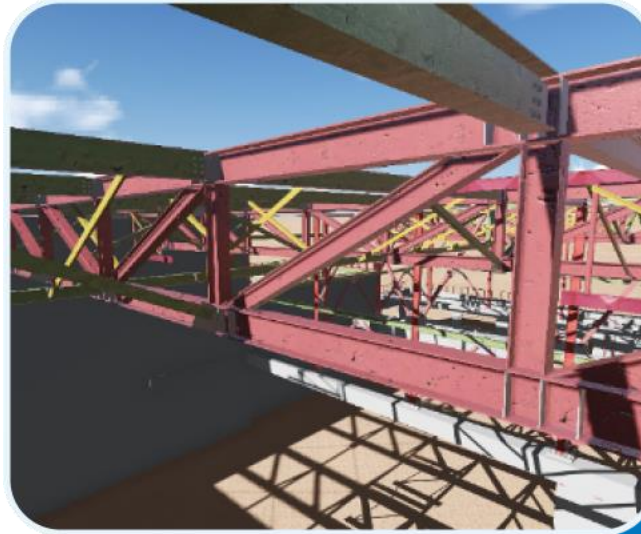
An established lineup of effective detailing services to ensure effective management of design and project constructability for reduced cost of installation and business growth.

STRUCTURAL STEEL DETAILING

PRECAST DETAILING

REBAR DETAILING, BAR BENDING LIST

CONCRETE DETAILING



FACADE ENGINEERING SERVICES

Accurate shop & fabrication drawings enabling clients to plan for optimized & balanced production of building envelope systems

CURTAIN WALLS

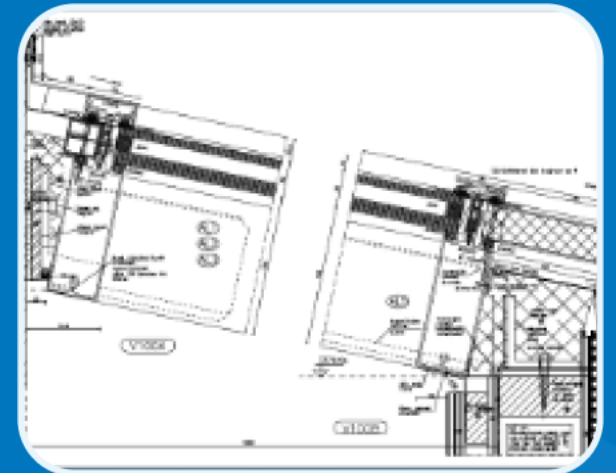
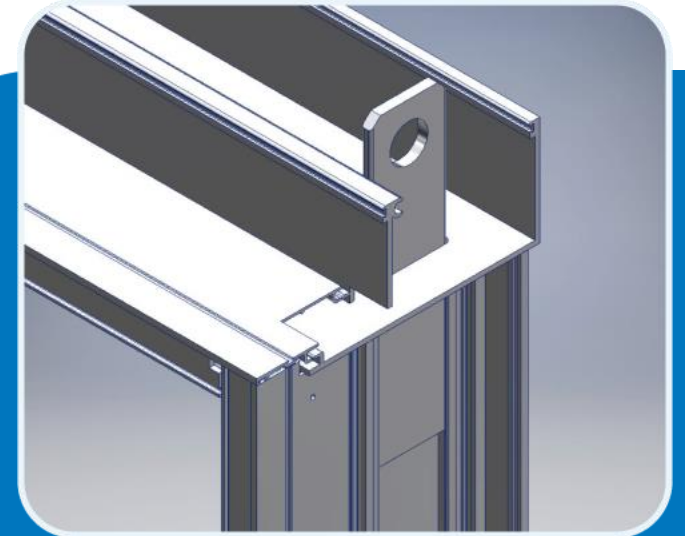
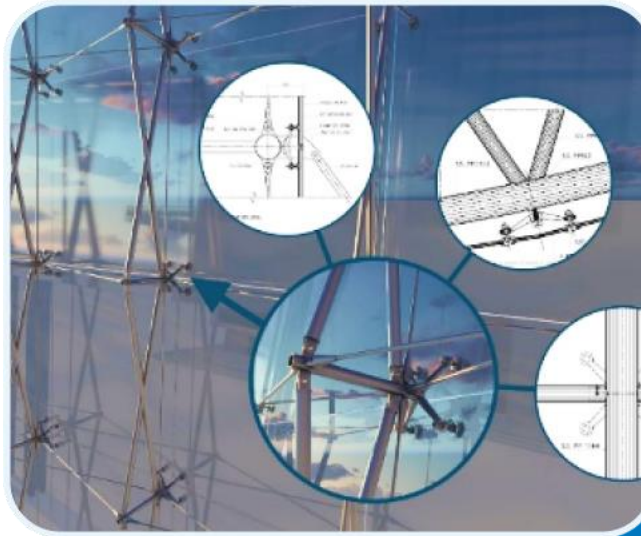
SPIDER GLAZING

SHOP FRONTS & FRAMELESS GLASS

METAL PANELS & HAND RAILS

SKY LIGHTING & CANOPIES

WINDOWS, SLIDING/PARTITION DOORS



CLASH DETECTION & RESOLUTION

Seamless coordination of MEP with Architecture & Structural trades, allowing all systems to work in perfect synchronization and at the same time maintaining the design intent

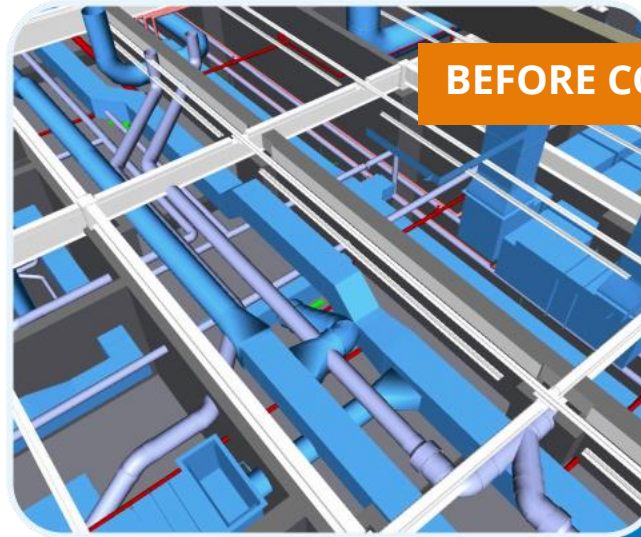
ARCHITECTURAL BIM

STRUCTURAL BIM

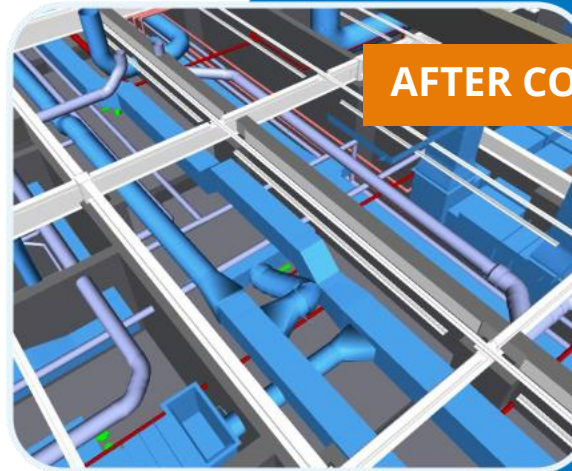
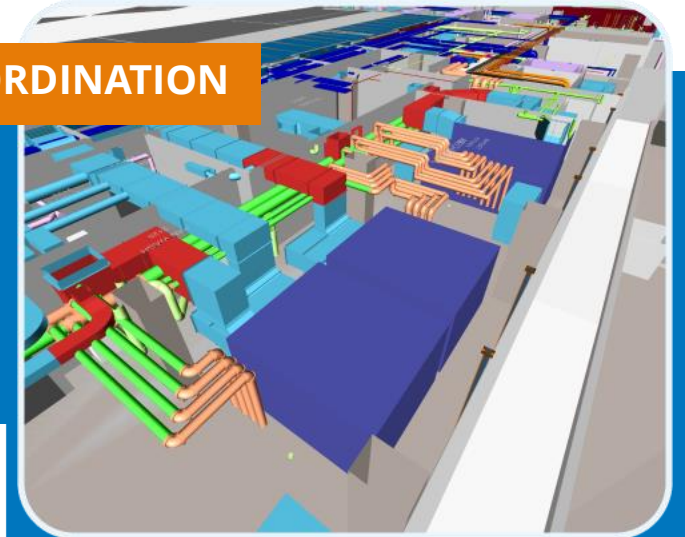
MEP BIM

RESOLUTION OF CLASHES

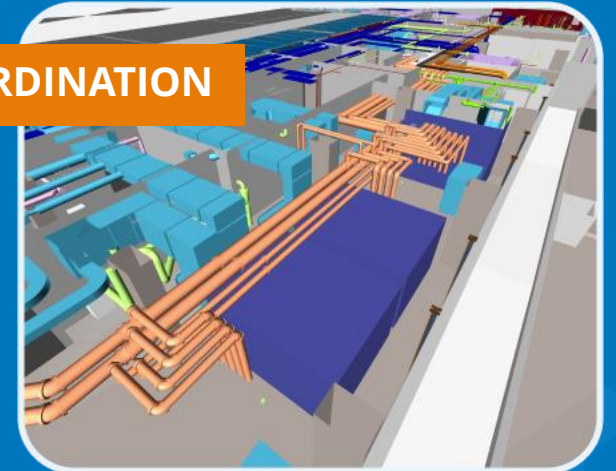
ONLINE COORDINATION MEETINGS



BEFORE COORDINATION



AFTER COORDINATION



INTEGRATED BIM PROJECT DELIVERY

Helping organizations leverage the potentials of BIM
integrating architectural, structural, mechanical &
plumbing systems

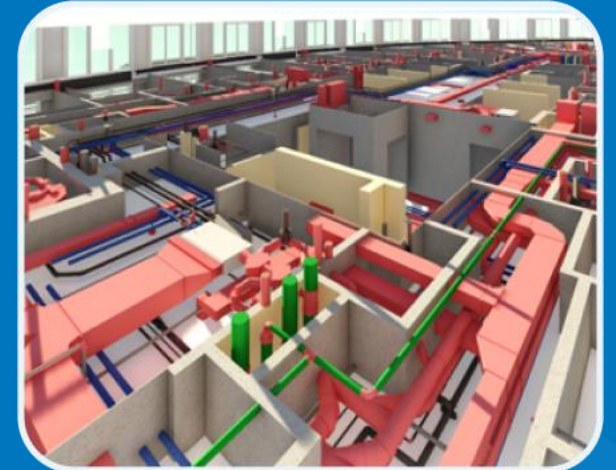
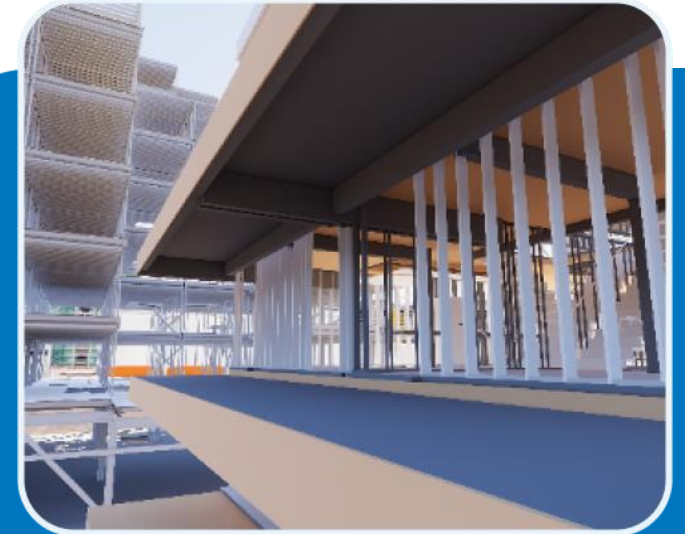
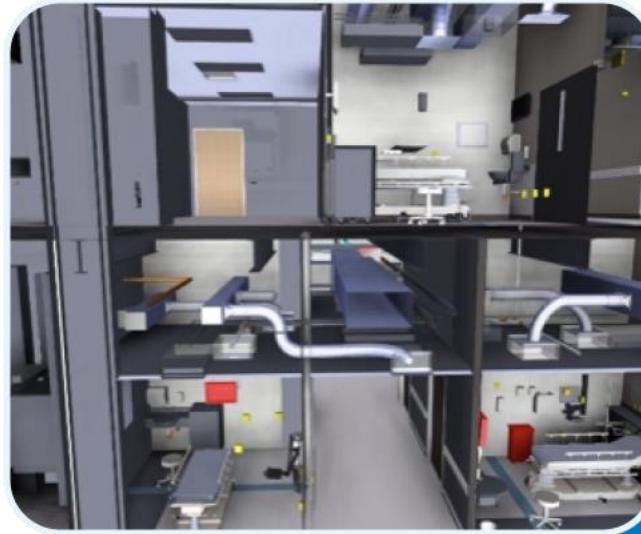
ARCHITECTURAL BIM

STRUCTURAL 3D MODELING

HVAC & PLUMBING MODELING

BIM CLASH COORDINATION

SHOP/FABRICATION DRAWINGS



INFRASTRUCTURE BIM

Integrated approach to model multi-disciplined trades for utility structures, power stations, water treatment plants, highways & bridges

BRIDGE INFORMATION MODELING

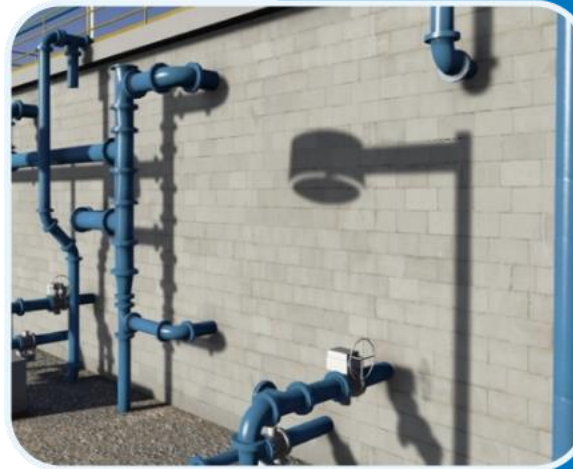
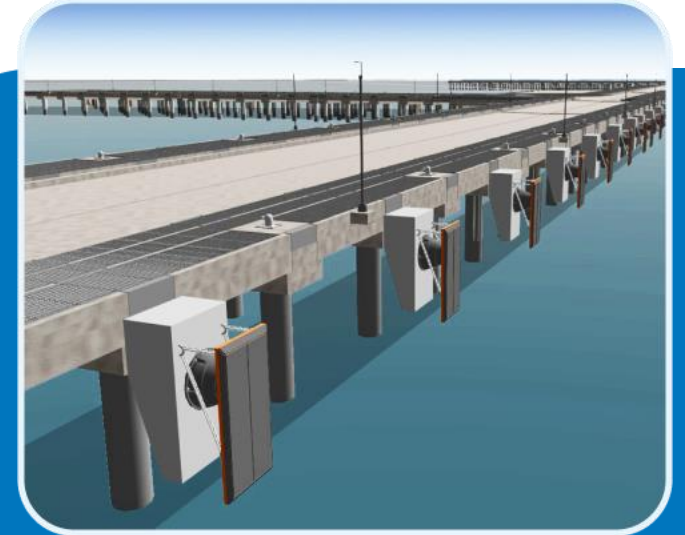
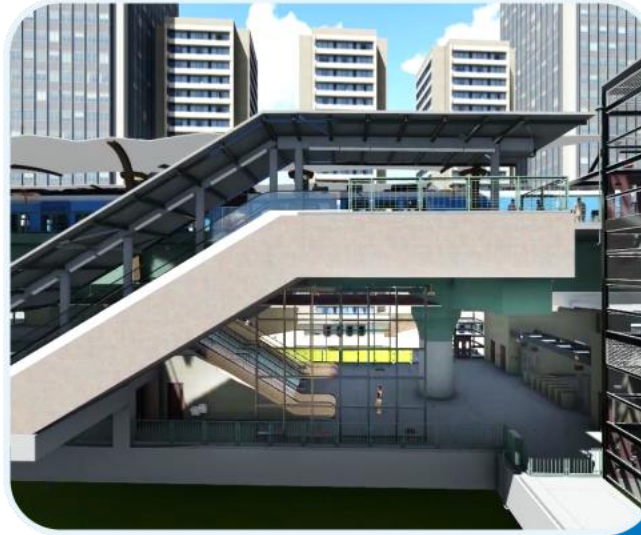
BIM FOR WATER TREATMENT PLANTS

LANDSCAPE & SITE MODELING

TUNNEL INFORMATION MODELING

MARINE/OFFSHORE STRUCTURE MODELING

BIM FOR TRANSPORTATION



INDUSTRIAL ENGINEERING

Our team create intelligent 3D models for site preparation, structural design and detailing, building design, piping and equipment layout. Enhance and integrate multidisciplinary collaboration and minimize data loss across your project.

PROCESS PIPING DRAWINGS

BILL OF MATERIAL

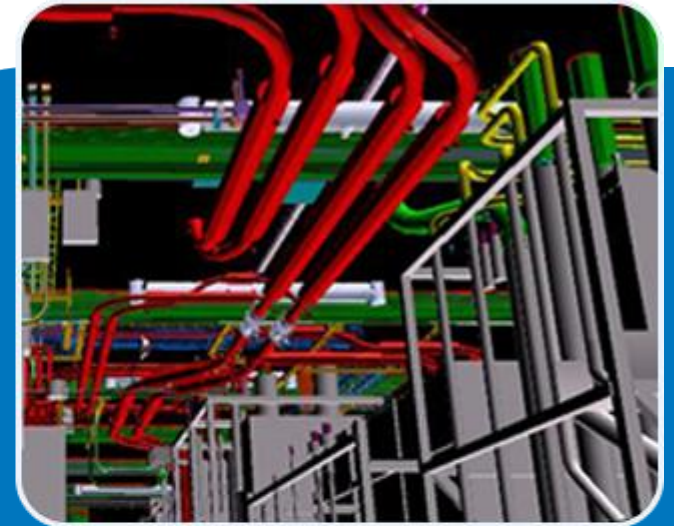
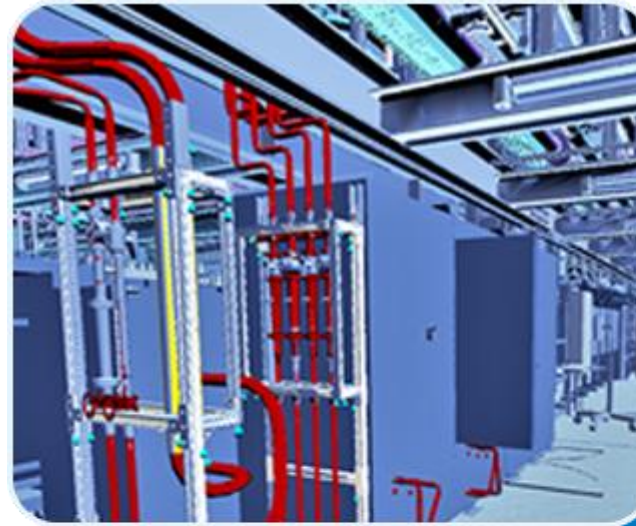
ISOMETRIC DRAWINGS

P & ID DIAGRAMS

SCHEMATIC DRAWINGS

AS-BUILT DOCUMENTATION

COLLISION CHECKING



MECHANICAL CAD/CAM

Our core expertise lies in providing 2D drafting & CAD 3D modeling services to clients for the fabrication & manufacturing of mechanical components.

SHOP DRAWINGS

FABRICATION DRAWINGS

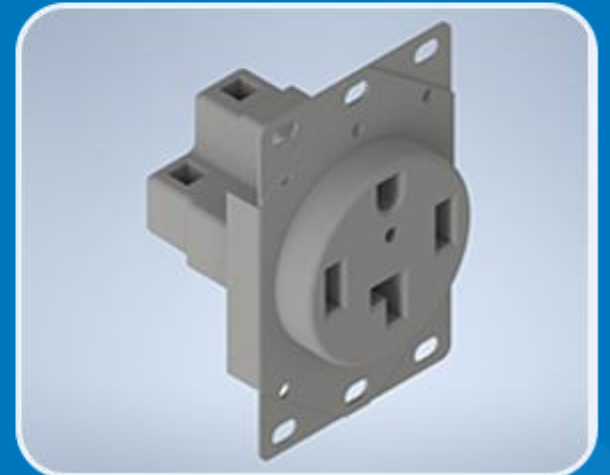
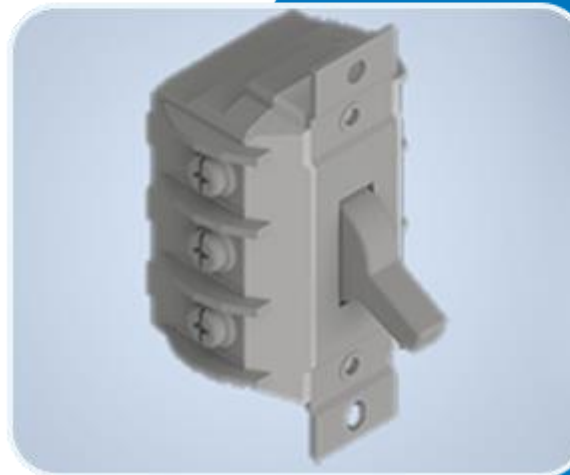
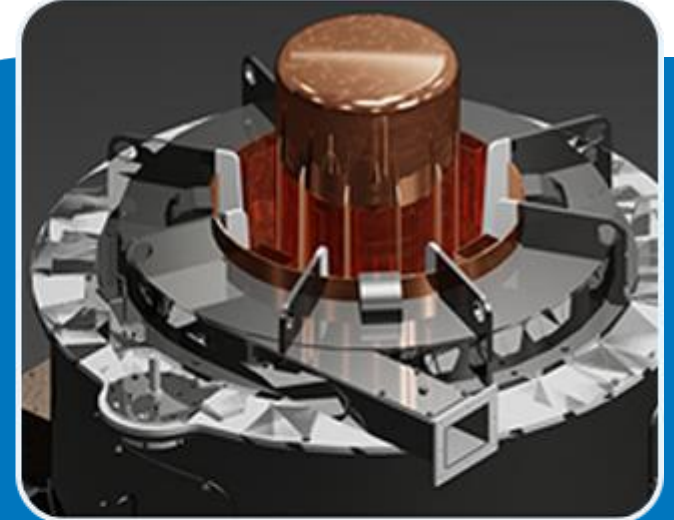
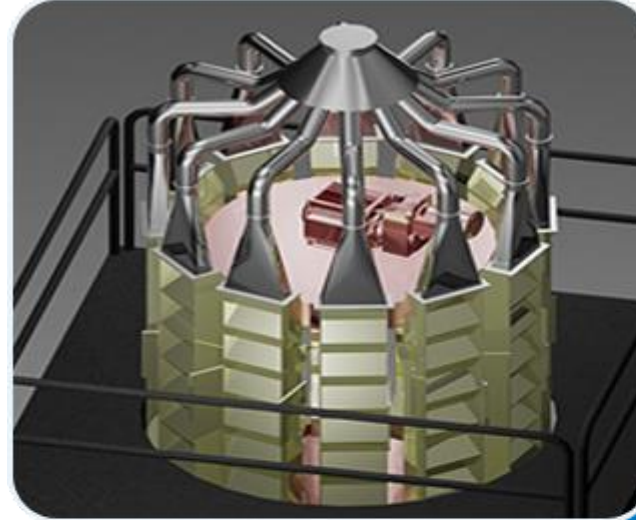
ASSEMBLY DRAWINGS

SHEET METAL DRAWINGS

ISOMETRIC DRAWING

PARAMETRIC MODELING

3D SOLID MODELING



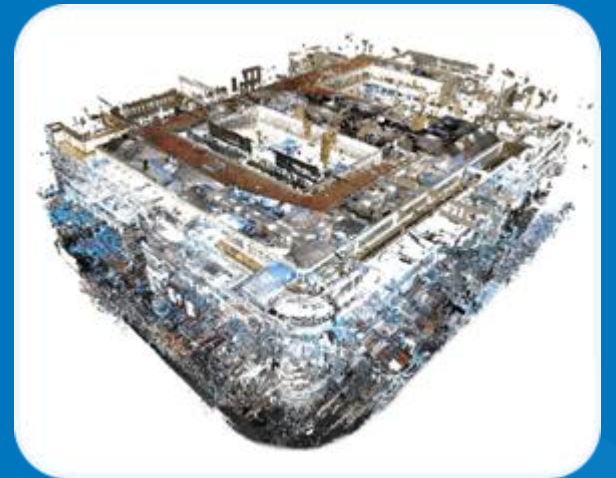
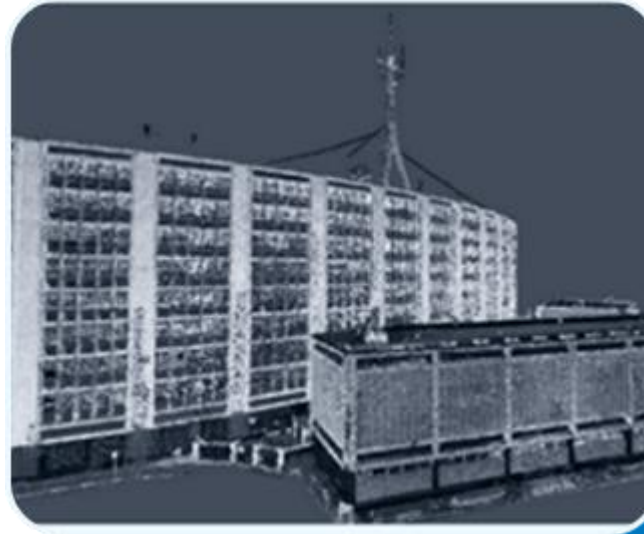
POINTCLOUD **SCAN TO BIM** MODELING

The 3D BIM model that we create from laser scan data serve as accurate models for as-built purposes as well as for retrofit, refurbishment and renovation projects.

ARCHITECTURAL CONVERSION

STRUCTURAL CONVERSION

MEP CONVERSION



REV

A

P

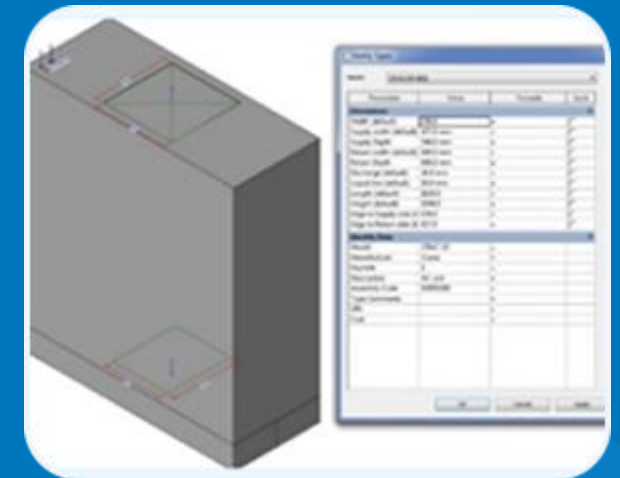
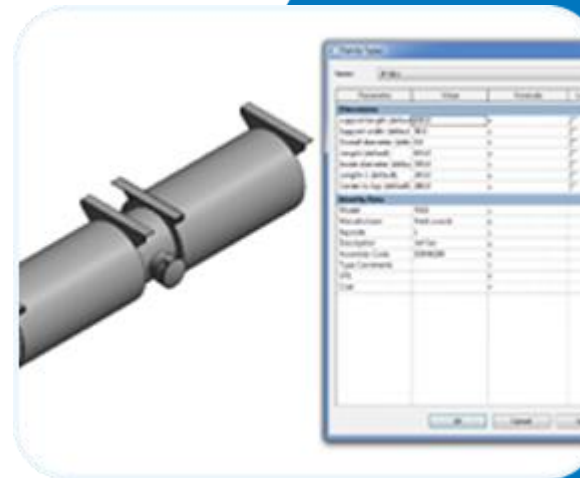
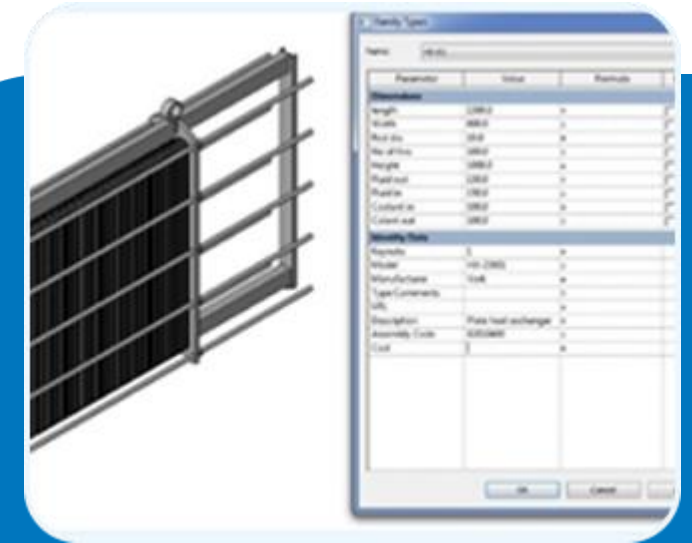
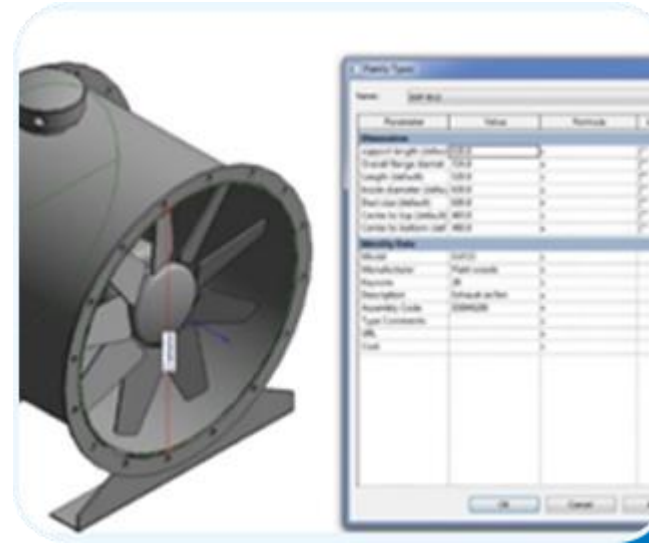
P

P

P

P

P



BIM CONSULTING SERVICES

Since 2007, we have been assisting construction companies, general & specialty contractors in their migration to BIM from CAD. We act as a strategic BIM partner to the client educating and training them for seamless migration from CAD drafting to BIM implementation.

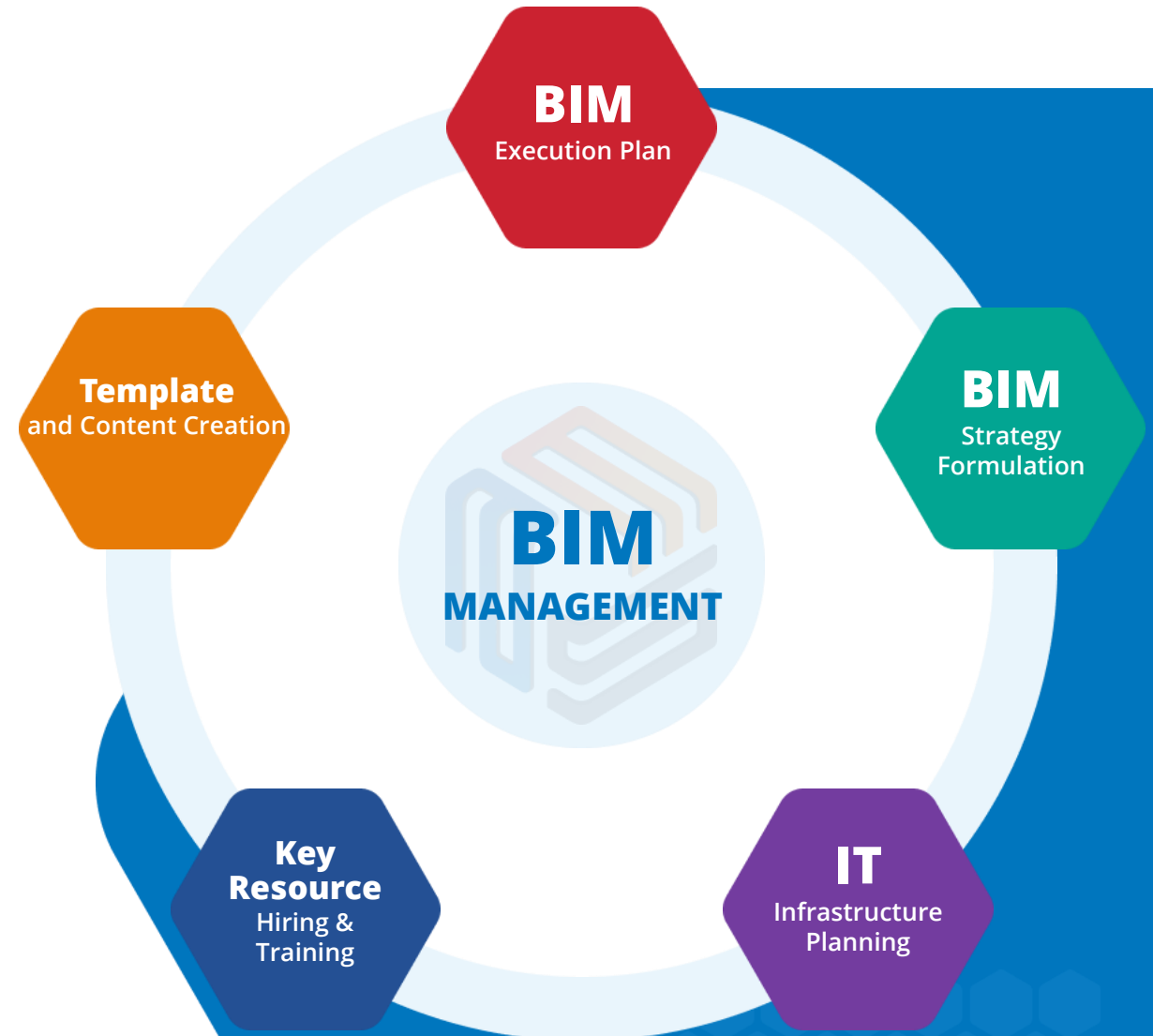
BIM MODEL AUDIT

OFFSHORE BIM TEAM

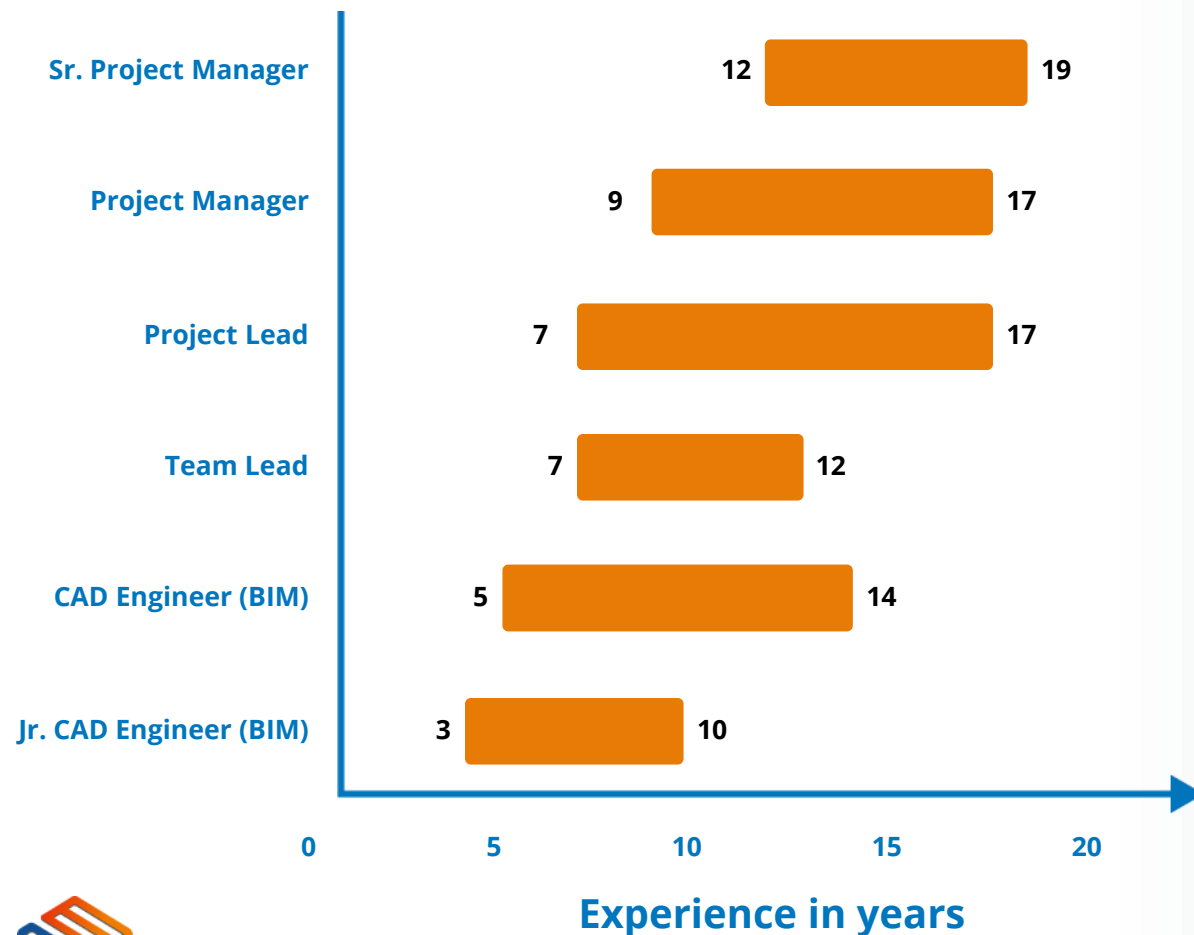
BIM IMPLEMENTATION PLANNING

BIM TRAINING

ON-SITE BIM SUPPORT



TEAM PROFICIENCY AND SOFTWARE PROFICIENCY



BIM TRAINING & CERTIFICATE PROGRAM

A Certificate Program in Building Information Modeling (BIM) is available at East Stroudsburg University (ESU) through a partnership between ESU and Advenser Technology Services, Inc. (Advenser).



EXPLORE
OUR
COURSES



**BIM for
Beginners**



**BIM Proficiency
Training**



**BIM for Building Utility
Services**

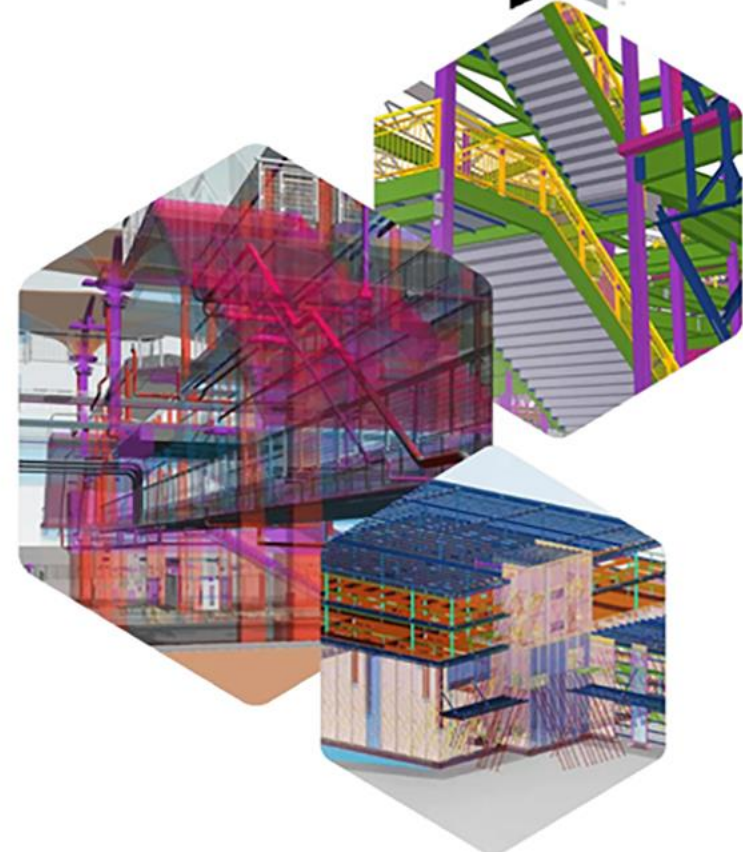


**BIM Manager
Training**

**BIM for Structural
Engineering**

**BIM for Facade
Engineering**

**BIM for Steel
Detailing**



Accredited by



CONTACT US



Advenser Technology Services, Inc.

Five Neshaminy Interplex, STE 205
Trevose, PA 19053, USA

Phone: +1 (215) 791 7955



Advenser LLC

Five Neshaminy Interplex, STE 205
Trevose, PA 19053, USA

Phone: +1 (215) 934 2868



Advenser Engineering Services Pvt. Ltd.

43 A, E block, 4F CSEZ, Kakkanad
Kochi, Kerala, India. Pin 682 037

Phone: +91 484 298 8448



Advenser Engineering Systems LLC

P.O. Box No: 118901,
Dubai, UAE

Phone: +971 50 237 7430



Advenser Engineering Services Pty. Ltd.

Unit 26, 14 Jubilee Avenue
Warriewood NSW 2102, Australia

Phone: +61 363 877 090



Advenser Engineering Services Pvt. Ltd.

403, 4F, Lulu Cyber Tower 1, Infopark
Kochi, Kerala, India. Pin 682 042

Phone: +91 484 404 0708



www.advenser.com



info@advenser.com

THANK YOU

