



# WHO WE ARE

---

Established in 2007, Advenser helps construction companies, general contractors, architects & engineers, integrate BIM into their projects seamlessly within their predefined timelines and budget, bridging the gap between concept & constructability.

## Mission

To provide services to customers globally with cutting edge technologies and guaranteed cost savings.

## Vision

To be recognized as a leading Business Process Outsourcing service provider delivering exemplary services.

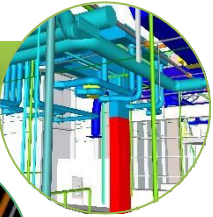


# OUR CLIENT BASE



# OUR MEP ENGINEERING SERVICES

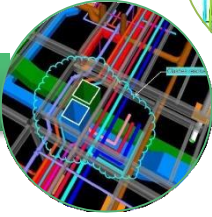
HVAC & PLUMBING MODELING



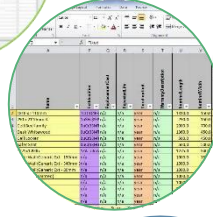
REVIT FAMILY CREATION



CLASH REPORT & RESOLUTION



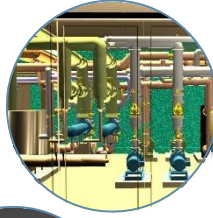
COBIE SERVICES



POINTCLOUD MODELING



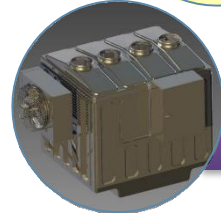
INDUSTRIAL BIM



SPOOL DRAWING



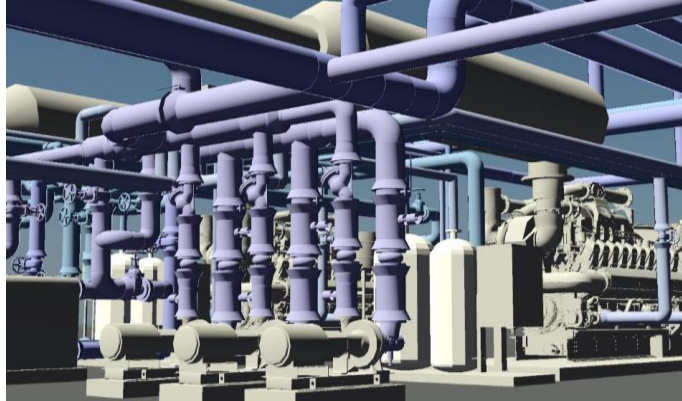
MECHANICAL MODELING



BIM CONSULTING



# HVAC & PLUMBING MODELING



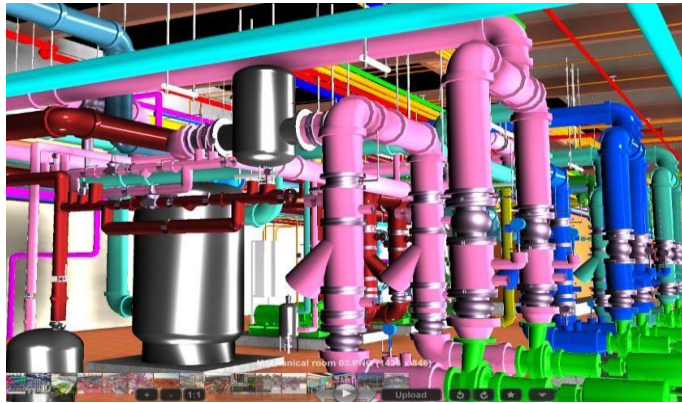
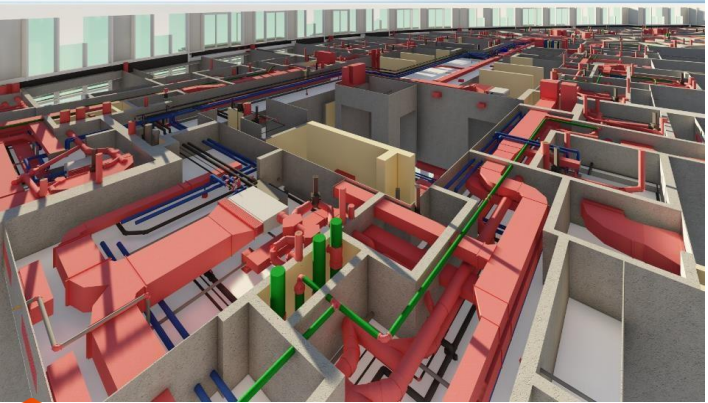
1. 3D MODELING

2. SHOP DRAWINGS

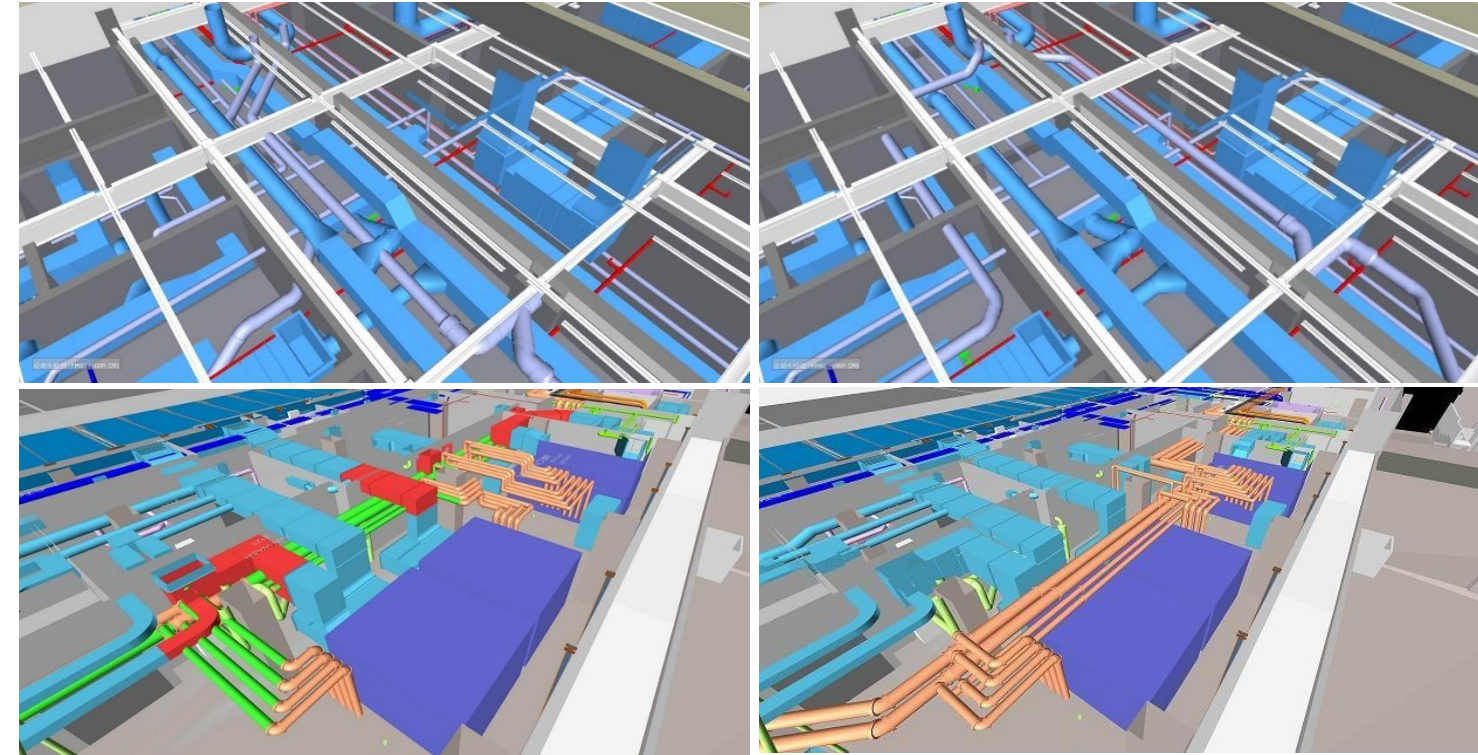
3. SPOOL DRAWING

4. AS BUILT DOCUMENTATION

5. QUANTITY TAKE OFF



# CLASH DETECTION & RESOLUTION



Before coordination

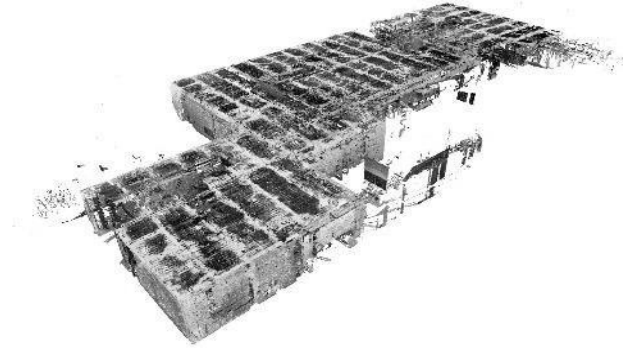
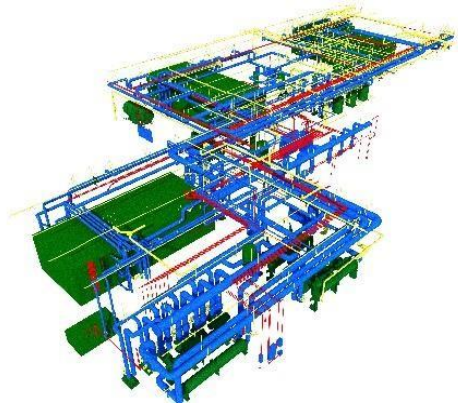
After coordination

Seamless coordination of MEP with Architecture & Structural trades, allowing all systems to work in perfect synchronization and at the same time maintaining the design intent.

Generation of Clash Reports, Resolution of Clashes and conducting BIM Coordination Meetings with contractors and other stakeholders.



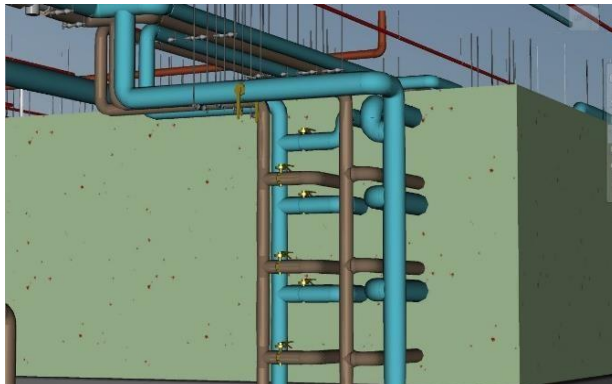
# POINTCLOUD MODELING



1. ARCHITECTURAL

2. STRUCTURAL

3. MEP



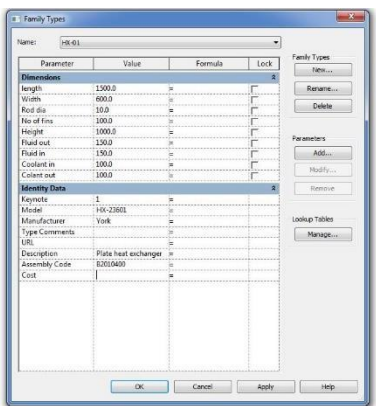
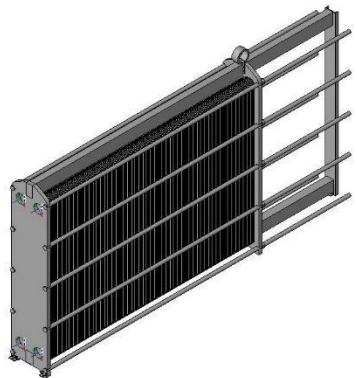
The 3D BIM model that we create from laser scan data serve as accurate models for as-built purposes as well as for Retrofit, Refurbishment and Renovation projects. It enables the creation of as-built BIM models for the renovation work of Infrastructure Assets such as tunnels and bridges.







# REVIT FAMILY CREATION



Creation of standard and customized Revit families for the retail, manufacturing and the construction industry from the manufacturer's submittals or even hand sketches.

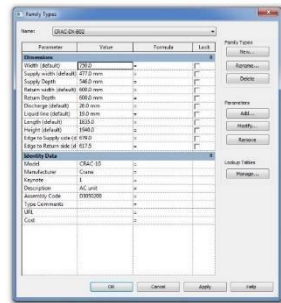
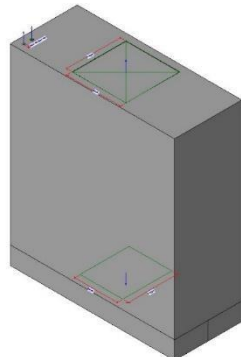
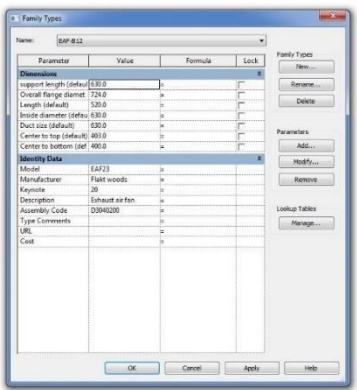
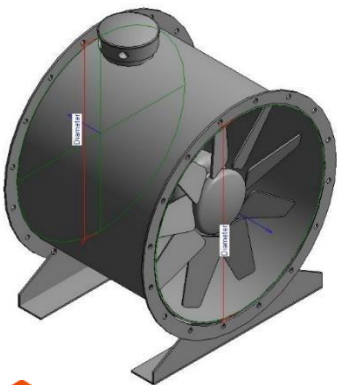
1. Architectural elements

2. Structural components

3. Mechanical fittings

4. Plumbing fixtures

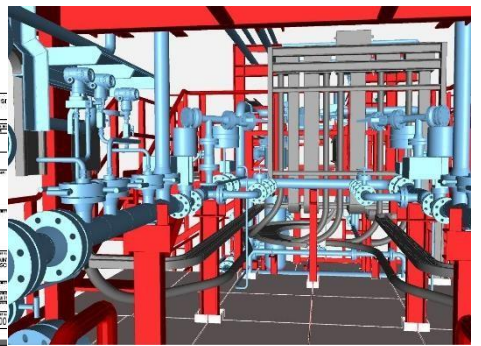
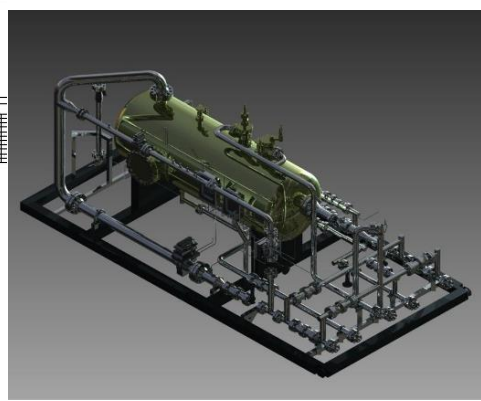
5. Product libraries



# INDUSTRIAL MODELING

3D Cam  
Elevation Front  
Elevation Right  
Elevation Top  
3D Cam PUMP SKID FRAMING  
LIFTING LUG DETAIL  
PUMP SKID FRAMING  
SIDE VIEW

| Item | Qty | Description        | Std Part | Length (mm) | Qty |
|------|-----|--------------------|----------|-------------|-----|
| 1    | 1   | PIPE TUB. SS SCH40 | 4050W    | 460         | 1   |
| 2    | 1   | PIPE TUB. SS SCH40 | 4050W    | 300         | 1   |
| 3    | 1   | PIPE TUB. SS SCH40 | 4050W    | 460         | 1   |
| 4    | 1   | PIPE TUB. SS SCH40 | 4050W    | 300         | 1   |
| 5    | 1   | PIPE TUB. SS SCH40 | 4050W    | 300         | 1   |
| 6    | 1   | PIPE TUB. SS SCH40 | 4050W    | 420         | 1   |
| 7    | 1   | PIPE TUB. SS SCH40 | 4050W    | 300         | 1   |
| 8    | 1   | PIPE TUB. SS SCH40 | 4050W    | 300         | 1   |
| 9    | 1   | PIPE TUB. SS SCH40 | 4050W    | 300         | 1   |
| 10   | 1   | PIPE TUB. SS SCH40 | 4050W    | 300         | 1   |
| 11   | 1   | PIPE TUB. SS SCH40 | 4050W    | 300         | 1   |
| 12   | 1   | PIPE TUB. SS SCH40 | 4050W    | 300         | 1   |
| 13   | 1   | PIPE TUB. SS SCH40 | 4050W    | 300         | 1   |
| 14   | 1   | PIPE TUB. SS SCH40 | 4050W    | 300         | 1   |
| 15   | 1   | PIPE TUB. SS SCH40 | 4050W    | 300         | 1   |
| 16   | 1   | PIPE TUB. SS SCH40 | 4050W    | 300         | 1   |
| 17   | 1   | PIPE TUB. SS SCH40 | 4050W    | 300         | 1   |
| 18   | 1   | PIPE TUB. SS SCH40 | 4050W    | 300         | 1   |
| 19   | 1   | PIPE TUB. SS SCH40 | 4050W    | 300         | 1   |
| 20   | 1   | PIPE TUB. SS SCH40 | 4050W    | 300         | 1   |
| 21   | 1   | PIPE TUB. SS SCH40 | 4050W    | 300         | 1   |
| 22   | 1   | PIPE TUB. SS SCH40 | 4050W    | 300         | 1   |
| 23   | 1   | PIPE TUB. SS SCH40 | 4050W    | 300         | 1   |
| 24   | 1   | PIPE TUB. SS SCH40 | 4050W    | 300         | 1   |
| 25   | 1   | PIPE TUB. SS SCH40 | 4050W    | 300         | 1   |
| 26   | 1   | PIPE TUB. SS SCH40 | 4050W    | 300         | 1   |
| 27   | 1   | PIPE TUB. SS SCH40 | 4050W    | 300         | 1   |
| 28   | 1   | PIPE TUB. SS SCH40 | 4050W    | 300         | 1   |
| 29   | 1   | PIPE TUB. SS SCH40 | 4050W    | 300         | 1   |
| 30   | 1   | PIPE TUB. SS SCH40 | 4050W    | 300         | 1   |
| 31   | 1   | PIPE TUB. SS SCH40 | 4050W    | 300         | 1   |
| 32   | 1   | PIPE TUB. SS SCH40 | 4050W    | 300         | 1   |
| 33   | 1   | PIPE TUB. SS SCH40 | 4050W    | 300         | 1   |
| 34   | 1   | PIPE TUB. SS SCH40 | 4050W    | 300         | 1   |
| 35   | 1   | PIPE TUB. SS SCH40 | 4050W    | 300         | 1   |
| 36   | 1   | PIPE TUB. SS SCH40 | 4050W    | 300         | 1   |
| 37   | 1   | PIPE TUB. SS SCH40 | 4050W    | 300         | 1   |
| 38   | 1   | PIPE TUB. SS SCH40 | 4050W    | 300         | 1   |
| 39   | 1   | PIPE TUB. SS SCH40 | 4050W    | 300         | 1   |
| 40   | 1   | PIPE TUB. SS SCH40 | 4050W    | 300         | 1   |
| 41   | 1   | PIPE TUB. SS SCH40 | 4050W    | 300         | 1   |
| 42   | 1   | PIPE TUB. SS SCH40 | 4050W    | 300         | 1   |
| 43   | 1   | PIPE TUB. SS SCH40 | 4050W    | 300         | 1   |
| 44   | 1   | PIPE TUB. SS SCH40 | 4050W    | 300         | 1   |
| 45   | 1   | PIPE TUB. SS SCH40 | 4050W    | 300         | 1   |
| 46   | 1   | PIPE TUB. SS SCH40 | 4050W    | 300         | 1   |
| 47   | 1   | PIPE TUB. SS SCH40 | 4050W    | 300         | 1   |
| 48   | 1   | PIPE TUB. SS SCH40 | 4050W    | 300         | 1   |
| 49   | 1   | PIPE TUB. SS SCH40 | 4050W    | 300         | 1   |
| 50   | 1   | PIPE TUB. SS SCH40 | 4050W    | 300         | 1   |
| 51   | 1   | PIPE TUB. SS SCH40 | 4050W    | 300         | 1   |
| 52   | 1   | PIPE TUB. SS SCH40 | 4050W    | 300         | 1   |
| 53   | 1   | PIPE TUB. SS SCH40 | 4050W    | 300         | 1   |
| 54   | 1   | PIPE TUB. SS SCH40 | 4050W    | 300         | 1   |
| 55   | 1   | PIPE TUB. SS SCH40 | 4050W    | 300         | 1   |
| 56   | 1   | PIPE TUB. SS SCH40 | 4050W    | 300         | 1   |
| 57   | 1   | PIPE TUB. SS SCH40 | 4050W    | 300         | 1   |
| 58   | 1   | PIPE TUB. SS SCH40 | 4050W    | 300         | 1   |
| 59   | 1   | PIPE TUB. SS SCH40 | 4050W    | 300         | 1   |
| 60   | 1   | PIPE TUB. SS SCH40 | 4050W    | 300         | 1   |
| 61   | 1   | PIPE TUB. SS SCH40 | 4050W    | 300         | 1   |
| 62   | 1   | PIPE TUB. SS SCH40 | 4050W    | 300         | 1   |
| 63   | 1   | PIPE TUB. SS SCH40 | 4050W    | 300         | 1   |
| 64   | 1   | PIPE TUB. SS SCH40 | 4050W    | 300         | 1   |
| 65   | 1   | PIPE TUB. SS SCH40 | 4050W    | 300         | 1   |
| 66   | 1   | PIPE TUB. SS SCH40 | 4050W    | 300         | 1   |
| 67   | 1   | PIPE TUB. SS SCH40 | 4050W    | 300         | 1   |
| 68   | 1   | PIPE TUB. SS SCH40 | 4050W    | 300         | 1   |
| 69   | 1   | PIPE TUB. SS SCH40 | 4050W    | 300         | 1   |
| 70   | 1   | PIPE TUB. SS SCH40 | 4050W    | 300         | 1   |
| 71   | 1   | PIPE TUB. SS SCH40 | 4050W    | 300         | 1   |
| 72   | 1   | PIPE TUB. SS SCH40 | 4050W    | 300         | 1   |
| 73   | 1   | PIPE TUB. SS SCH40 | 4050W    | 300         | 1   |
| 74   | 1   | PIPE TUB. SS SCH40 | 4050W    | 300         | 1   |
| 75   | 1   | PIPE TUB. SS SCH40 | 4050W    | 300         | 1   |
| 76   | 1   | PIPE TUB. SS SCH40 | 4050W    | 300         | 1   |
| 77   | 1   | PIPE TUB. SS SCH40 | 4050W    | 300         | 1   |
| 78   | 1   | PIPE TUB. SS SCH40 | 4050W    | 300         | 1   |
| 79   | 1   | PIPE TUB. SS SCH40 | 4050W    | 300         | 1   |
| 80   | 1   | PIPE TUB. SS SCH40 | 4050W    | 300         | 1   |
| 81   | 1   | PIPE TUB. SS SCH40 | 4050W    | 300         | 1   |
| 82   | 1   | PIPE TUB. SS SCH40 | 4050W    | 300         | 1   |
| 83   | 1   | PIPE TUB. SS SCH40 | 4050W    | 300         | 1   |
| 84   | 1   | PIPE TUB. SS SCH40 | 4050W    | 300         | 1   |
| 85   | 1   | PIPE TUB. SS SCH40 | 4050W    | 300         | 1   |
| 86   | 1   | PIPE TUB. SS SCH40 | 4050W    | 300         | 1   |
| 87   | 1   | PIPE TUB. SS SCH40 | 4050W    | 300         | 1   |
| 88   | 1   | PIPE TUB. SS SCH40 | 4050W    | 300         | 1   |
| 89   | 1   | PIPE TUB. SS SCH40 | 4050W    | 300         | 1   |
| 90   | 1   | PIPE TUB. SS SCH40 | 4050W    | 300         | 1   |
| 91   | 1   | PIPE TUB. SS SCH40 | 4050W    | 300         | 1   |
| 92   | 1   | PIPE TUB. SS SCH40 | 4050W    | 300         | 1   |
| 93   | 1   | PIPE TUB. SS SCH40 | 4050W    | 300         | 1   |
| 94   | 1   | PIPE TUB. SS SCH40 | 4050W    | 300         | 1   |
| 95   | 1   | PIPE TUB. SS SCH40 | 4050W    | 300         | 1   |
| 96   | 1   | PIPE TUB. SS SCH40 | 4050W    | 300         | 1   |
| 97   | 1   | PIPE TUB. SS SCH40 | 4050W    | 300         | 1   |
| 98   | 1   | PIPE TUB. SS SCH40 | 4050W    | 300         | 1   |
| 99   | 1   | PIPE TUB. SS SCH40 | 4050W    | 300         | 1   |
| 100  | 1   | PIPE TUB. SS SCH40 | 4050W    | 300         | 1   |



1. P & I diagram
2. BIM object creation
3. GA & Equipment Layout
4. Structural Frame arrangement
5. Process Schematic Diagram
6. Process Piping drawings



# BIM CONSULTING

Since 2007 we have been assisting construction companies, general & specialty contractors in their migration to BIM from CAD. We act as a strategic BIM partner to the client educating and training them for seamless migration from CAD drafting to BIM implementation.

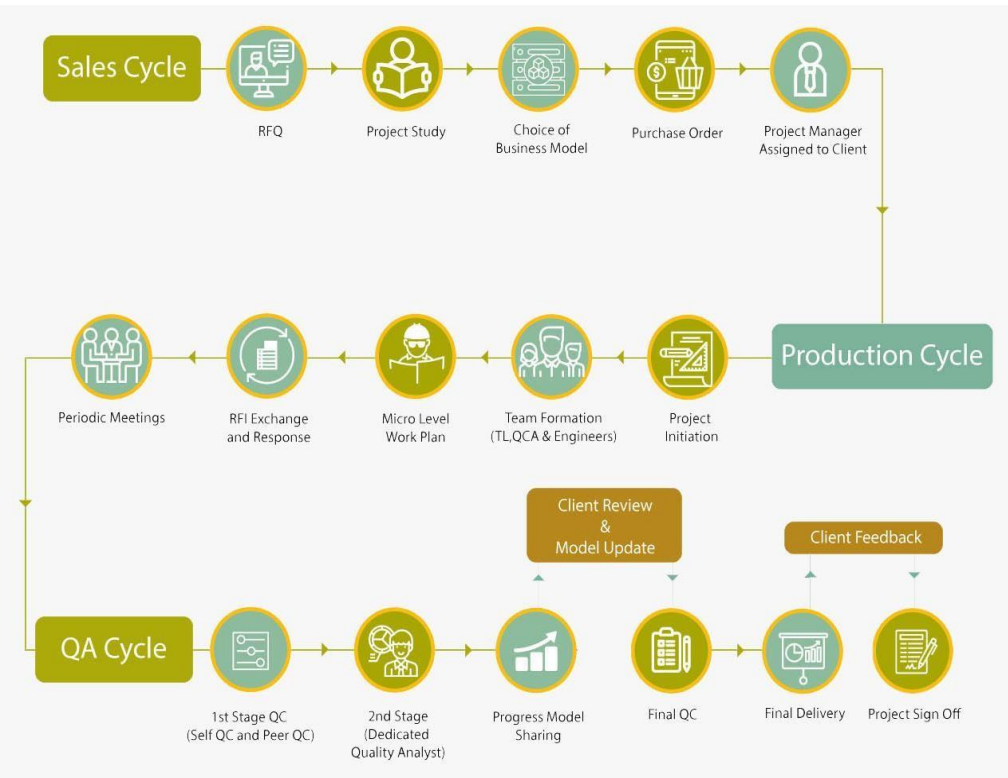
- 1. BIM Model Audit
- 2. Offshore BIM Team
- 3. BIM Implementation Planning
- 4. BIM Training
- 5. On-Site BIM Support





# OUR DETAILING PROCEDURE

# OUR APPROACH



**Understanding Client Requirements :** With every client, we understand that a different approach may need to be employed with every project, bringing a new set of skills and technology to the table. We devote the time needed to study the objective of the project.

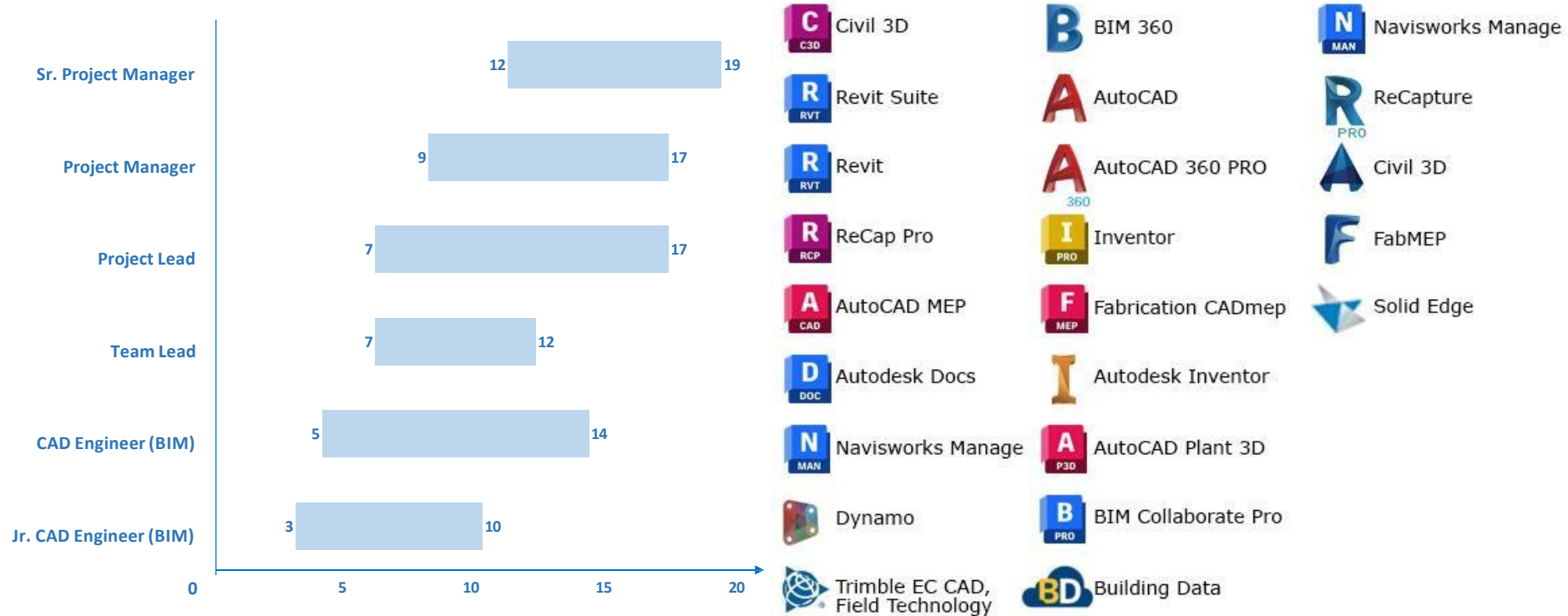
**Delivering Solutions :** To achieve the goals of the project, our engineers adopt the most appropriate methods, outdoing themselves. Our work is to follow a system driven process incorporating the latest methods in the BIM industry which ensures projects are delivered on time and are nothing short of the highest quality..

**Constant Improvement:** The engineering team, led by highly capable and seasoned project managers tirelessly learn, research and update themselves to meet the ever-changing and dynamic demands of the AEC industry. Systematic knowledge sharing and perfection of the work process is an ongoing process in Advenser. With every project, we see to it that we always make room for innovation.

**Our Promise :** Client satisfaction is a promise we assure and we measure our successes on par with that of our client's. We take pride in our past glory & achievements but at the same time strive to make them nothing more than mere milestones in our pursuit of excellence.



# TEAM PROFICIENCY & SOFTWARE PROFICIENCY



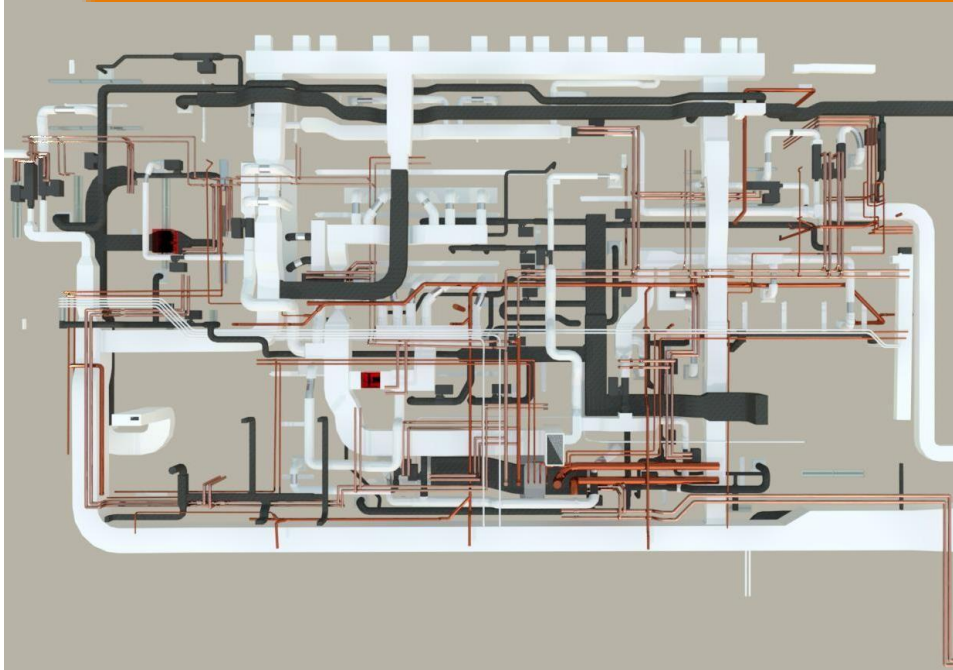
# FEATURED PROJECTS

Imperial Avenue, UAE



# FEATURED PROJECTS

Biogen Oligo Labs building, MA, USA





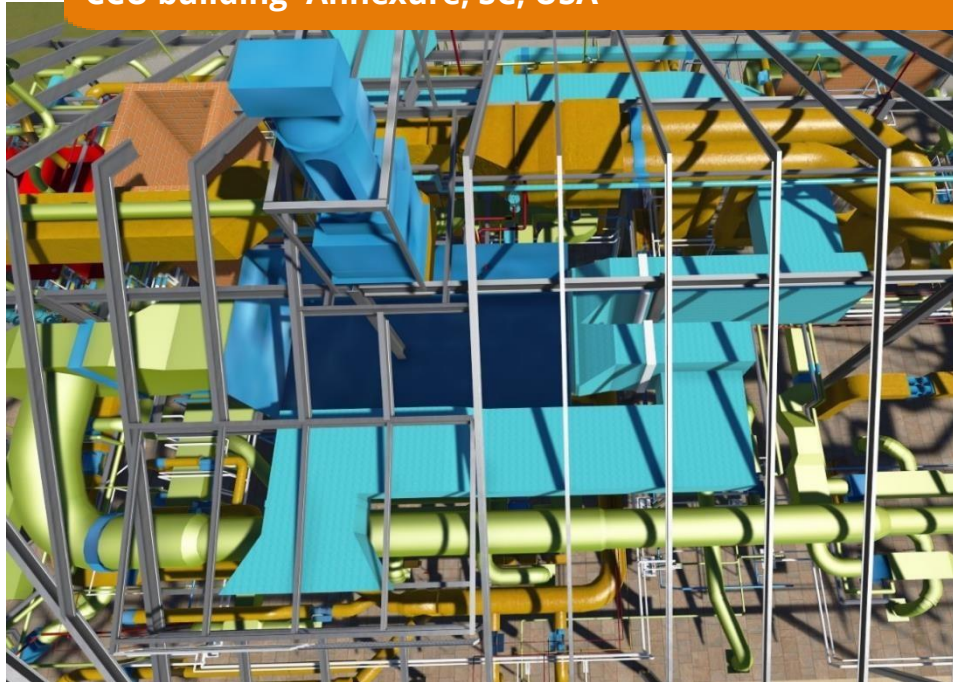
# FEATURED PROJECTS

Westfield University, MA , USA



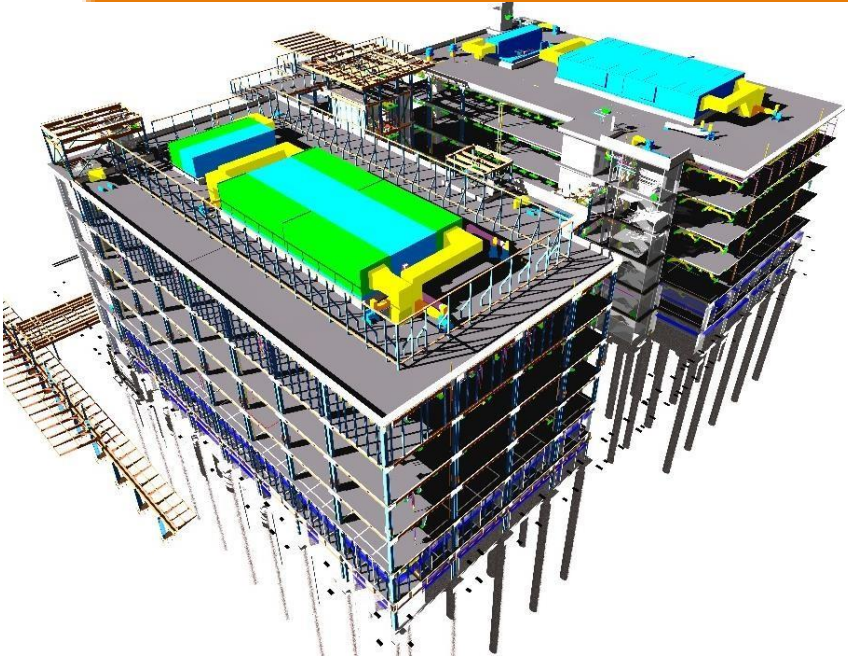
# FEATURED PROJECTS

CCU building- Annexure, SC, USA



# FEATURED PROJECTS

Fort Bliss Clinics, TX, USA



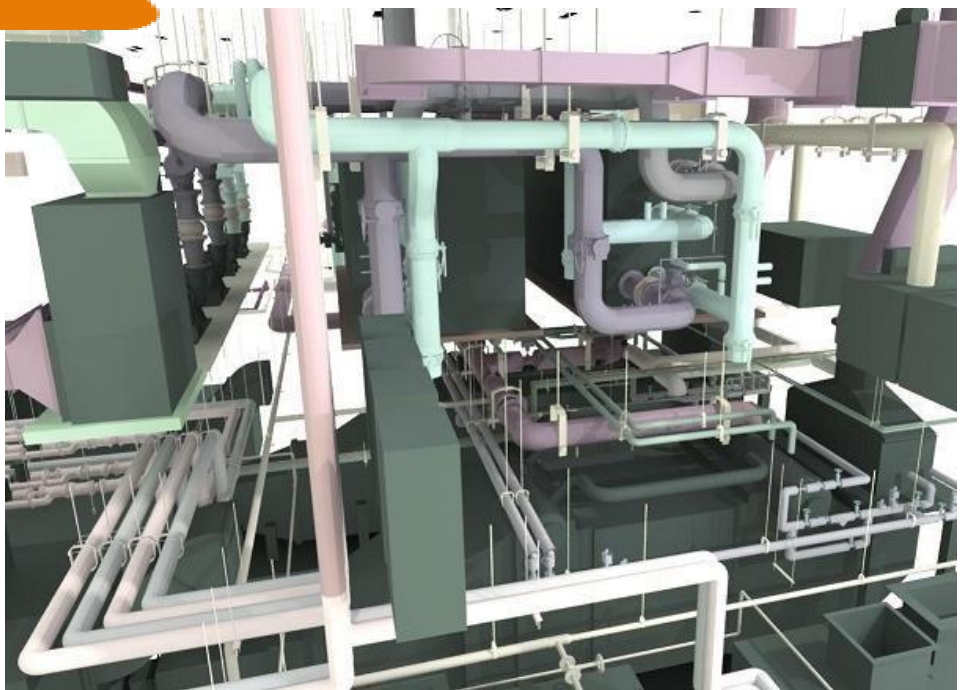
# FEATURED PROJECTS

UMASS Chapel, MA, USA



# FEATURED PROJECTS

West Haven Combined Heat & Power CHP, VA, USA



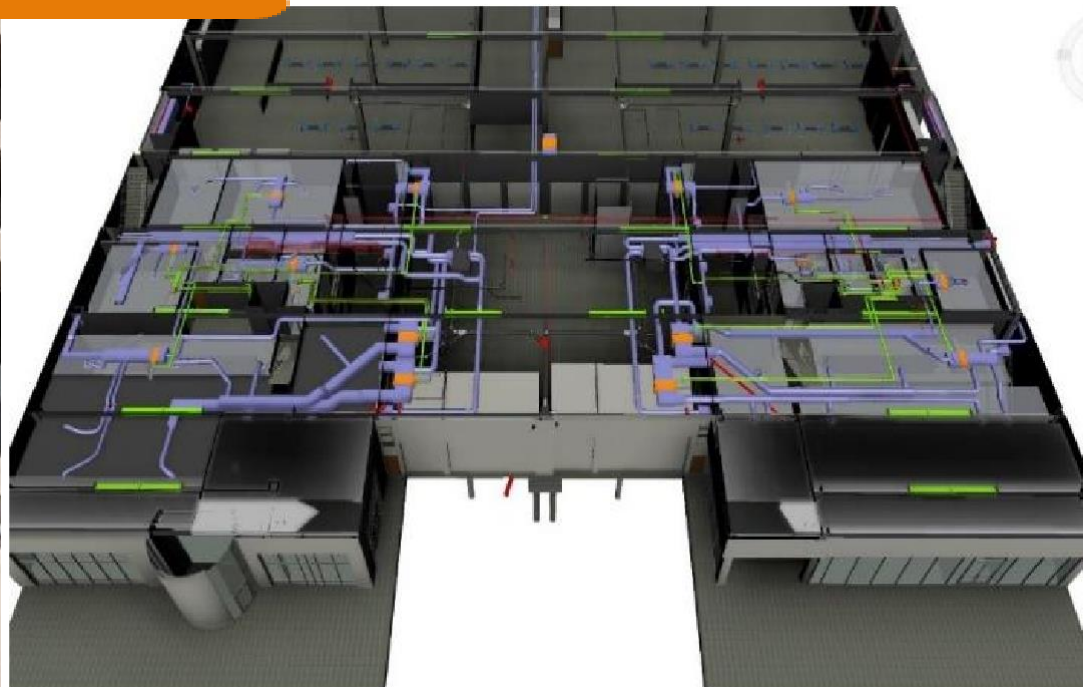
# FEATURED PROJECTS

Mystic Seaport, CT, USA



# FEATURED PROJECTS

Honda-Toyota Showroom, WA, USA



# FEATURED PROJECTS

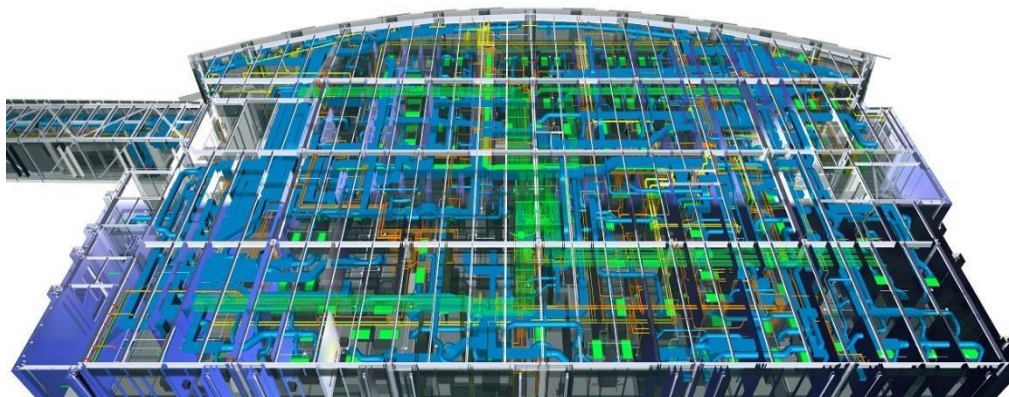
7001 Arlington, MD, USA





# FEATURED PROJECTS

Shriners Hospital, OH, USA



# FEATURED PROJECTS

Peiřh Police Station, WA, Ausřlia



# CONTACT US



## **Advenser Technology Services, Inc.**

Five Neshaminy Interplex, STE 205  
Trevose, PA 19053, USA  
Phone: +1 (215) 791 7955



## **Advenser LLC**

Five Neshaminy Interplex, STE 205  
Trevose, PA 19053, USA  
Phone: +1 (215) 934 2868



## **Advenser Engineering Services Pvt. Ltd.**

43 A, E block, 4F CSEZ, Kakkanad  
Kochi, Kerala, India. Pin 682 037  
Phone: +91 484 298 8448



## **Advenser Engineering Systems LLC**

P.O. Box No: 118901,  
Dubai, UAE  
Phone: +971 50 237 7430



## **Advenser Engineering Services Pty. Ltd.**

Unit 26, 14 Jubilee Avenue  
Warriewood NSW 2102, Australia  
Phone: +61 363 877 090



## **Advenser Engineering Services Pvt. Ltd.**

403, 4F, Lulu Cyber Tower 1, Infopark  
Kochi, Kerala, India. Pin 682 042  
Phone: +91 484 404 0708



[www.advenser.com](http://www.advenser.com)



[info@advenser.com](mailto:info@advenser.com)

[www.advenser.com](http://www.advenser.com)

THANK YOU



[info@advenser.com](mailto:info@advenser.com)